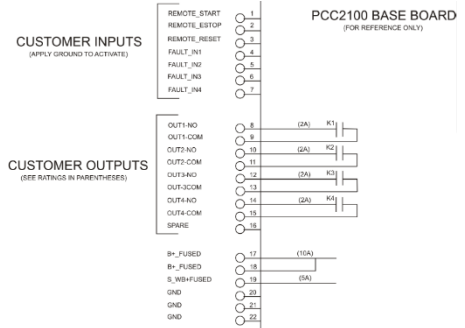
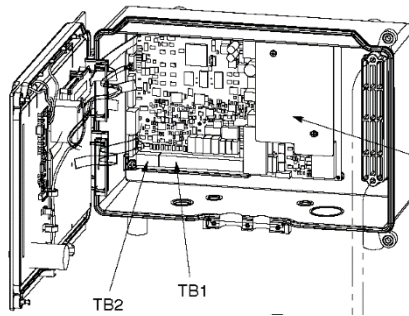


Cummins PCC 2100



| Generac Gateway Side Termination | Description | Wire Color | Customer Side Terminations |
|----------------------------------|----------------|--------------|---|
| TB1 V+ | DC+ | Red | TB1-17 or 18 Jump DC+ to TB1-9, 11, and 13 |
| TB1 V- | DC- | Black | TB1-20, 21, or 22 |
| TB2 DICOM | Input Common | Orange | TB1-20, 21, or 22 |
| TB2 DI0 | Engine Running | Purple | TB1-19 |
| TB2 DI1 | Not In Auto | Green | TB1-12 |
| TB2 DI2 | Common Alarm | White | TB1-8 Jump TB1-8 to 10 |
| Harness Relay #1 | COM | Blue | TB1-1 |
| | N/O | White / Blue | TB1-20, 21, or 22 |

*If MODEM and signal lights turn off and data is lost after gen crank, this can indicate a brief loss of power. To correct, ensure red and black wires are connected directly to the battery posts.

